



TOYOTA C-HR



Don't just take to the streets – own them. Turn corners, turn heads, turn up. Your attitude is mirrored by your car: stand-out style with inner confidence that pushes away convention. The already iconic Toyota C-HR, with its striking looks and unconventional spirit, is now your ideal counterpart. So step inside the lush interior, grab the wheel and power towards your new adventure. With the new Toyota C-HR, you'll satisfy your need for more and own your future.



**LEAVE
ORDINARY
BEHIND**

TIME TO WAKE UP THE CITY

In a world full of ordinary: stand out. Disrupt convention, throw away the rule book and trust in the value of the extraordinary. The new Toyota C-HR embodies just this. It's a modern coupé with an angular design which shouts dynamism and a compact silhouette that embodies urban mobility; yet it's coupled with a wide stance, formidable power and unforgiving ability – an uncompromising ode to the SUV. So aspire to be great, live to be yourself and enjoy life's adventures.





INSTANT POWER, SEAMLESS HYBRID PERFORMANCE

If life is a journey that needs to be driven the new Toyota C-HR is your passport to adventures yet to be discovered. Engaging, dynamic and exceptionally efficient, with instant acceleration that makes overtaking a breeze, and a commanding drive that can conquer any road – the Toyota C-HR is eager and ready to go. Welcome to the next level Hybrid experience.



THE ROAD IS YOURS

Smooth, efficient and even more economical, the new Toyota C-HR is now available with a choice of two self-charging Hybrid powertrains. With outstanding performance from the new 2.0 litre Hybrid Dynamic Force powertrain, it threads through city streets, powers along motorways, defying convention at every opportunity.

Specifications

HYBRID

2.0 L PETROL HYBRID E-CVT

Power **184 DIN hp**

Fuel consumption* **5.2–5.7 l/100 km**

CO₂ emissions* **119–128 g/km**

0–100 km/h **8.2 seconds**

HYBRID

1.8 L PETROL HYBRID E-CVT

Power **122 DIN hp**

Fuel consumption* **4.8–5.2 l/100 km**

CO₂ emissions* **109–118 g/km**

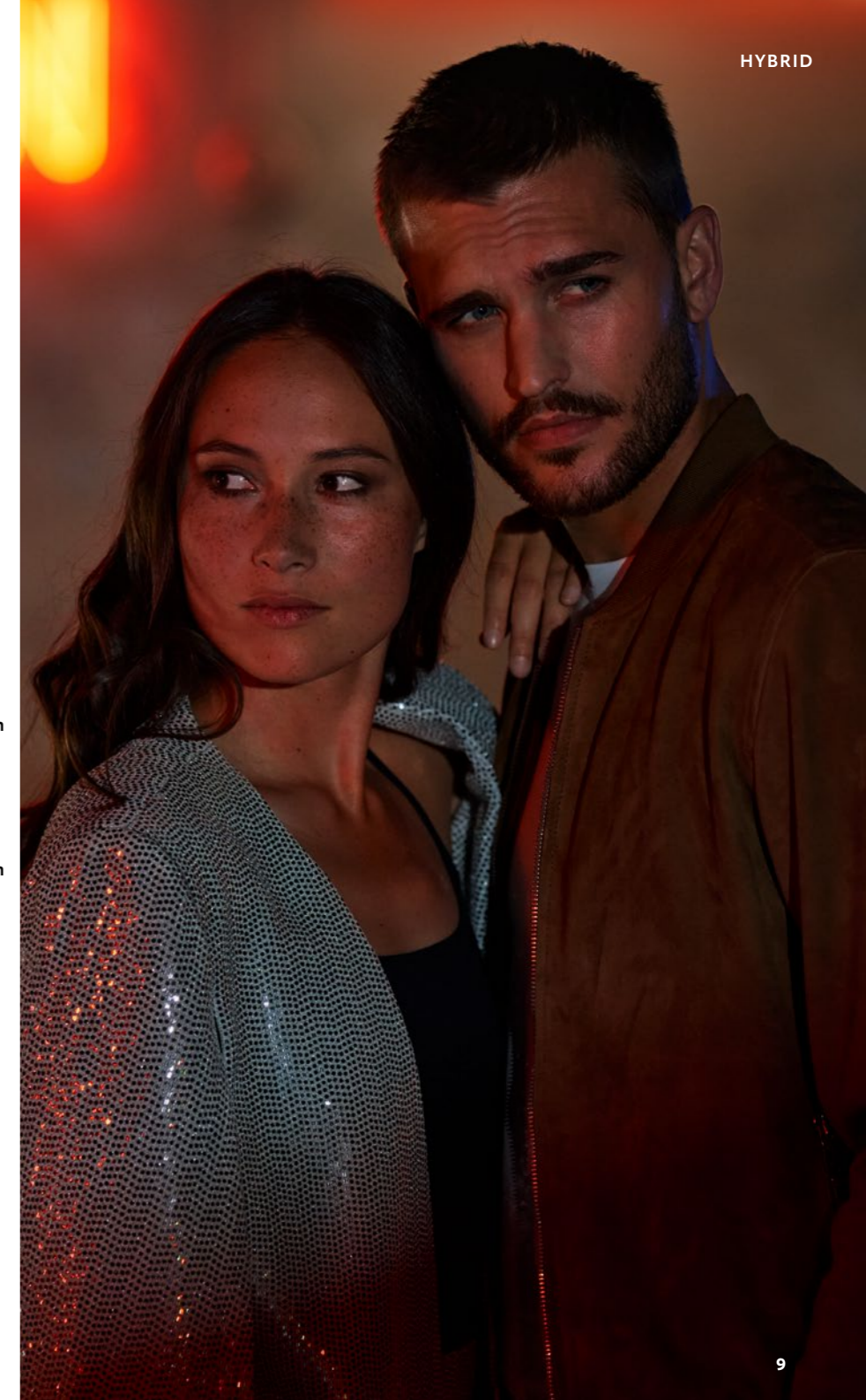
0–100 km/h **11.0 seconds**

M/T = Manual transmission

e-CVT = electronically controlled

Continuously Variable Transmission

* Combined cycle.



CLEAN CUT DETAILS TAKE CENTRE STAGE

You want the most out of every moment: the way you live, the way you work and the way you play. The new Toyota C-HR gets it. That's why we've designed the cabin to be enjoyed. With seats that hug your every contour and strong diamond patterns that add prestige, both comfort and style are catered for. Lining the interior are soft-touch surfaces, contrasted by gloss black inserts which add a contemporary feel. As day fades, the mood changes, and you are bathed in the soft blue glow of the ambient lighting. In the Toyota C-HR your every sense is satisfied.

CONNECT YOUR PHONE GET MORE FROM YOUR DRIVE

MyT | Connected
Services

LIFE HAPPENS WHEN YOU CONNECT

MyT Connected Services includes MyT Multimedia and MyT App. Each suite is host to its own set of features, designed to make driving safer and more fun, whether you are inside or outside your vehicle. Through MyT Connected Services, you'll have access to Hybrid Coaching which helps you optimize your EV driving, and real-time updates such as speed camera warnings. In addition you'll have the ability to connect your phone to your car to enjoy your favourite apps directly through the infotainment screen. Discover more at: www.toyota-europe.com/MyT

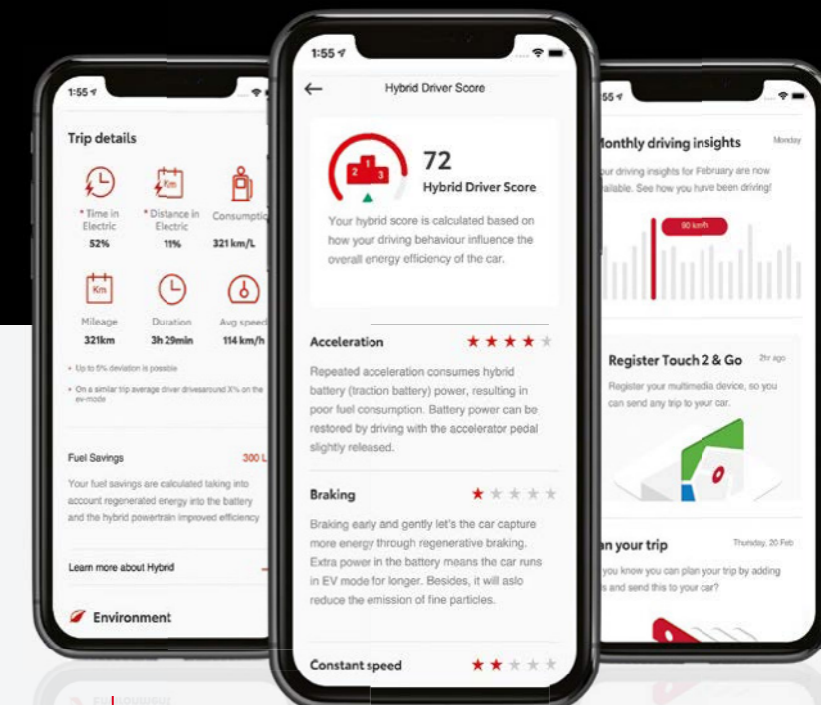


MyT | Multimedia

INTUITIVE, ADVANCED AND ENTERTAINING
With smartphone integration via Apple CarPlay™ and Android Auto™ you can also use favourite apps like Spotify, WhatsApp, Audible, Google Maps and Waze, all accessible via Siri voice assist and Ok Google.

MyT Multimedia gives you access to the information you really need, like real-time traffic alerts and speed camera alerts. You can also check Points of Interest, locate parking spaces and review destinations with Google Street View.

CONNECTED SERVICES



MyT | App

ALWAYS CONNECTED TO YOUR TOYOTA

MyT App on your smartphone lets you communicate with your car, no matter where you are. You can plan journeys from home, locate your parked car and even receive service maintenance notifications. The Hybrid Coaching feature provides analytics on your driving style, together with useful feedback that can help increase your EV driving ratio and improve your fuel efficiency, so you can get the most from your Hybrid.

MyT BY TOYOTA



YOU DO LIFE, WE DO SAFETY

Amongst the hustle and bustle of life, it's reassuring to know that Toyota C-HR is equipped with some of the most sophisticated safety technologies available. So whilst you're focusing on life, Toyota C-HR will be concentrating on your well-being.

Blind Spot Monitor

Alerts the driver to any vehicles that might be missed in the side view mirrors.

Rear Cross Traffic Alert (with Automatic Braking)

When you back out of a parking space, rear-mounted sensors identify vehicles approaching from the left or right, warning you and then applying the brakes to avoid a collision.

Intelligent Clearance Sonar

Using an array of sensors to create a 360° picture, the system detects objects around the vehicle, and provides an audible warning before applying the brakes to avoid a collision.





C-ENTER

THE
COLLECTION
FIND THE
MATCH THAT
FITS YOUR LIFE

STANDARD EQUIPMENT

- Bi-LED headlights with manual beam height adjustment
- 17" silver alloy wheels
- Push Start - start the engine by pressing Start button (hybrid models only)
- 4.2" multi-information screen
- Rear-view camera
- Smartphone integration - Possibility to connect to smartphones via Apple CarPlay or Android car app*
- Hill-start Assist Control (HAC)
- **Toyota Safety Sense® (advanced active safety package):**
 - PCS (Pre-Collision System) automatic braking system in the event of a collision
 - PCS (Pre-Collision System) with Pedestrian Detection
 - AHB (Auto High Beam) - automatic switching of high and low lights
 - LDA (Lane Departure Alert) Lane Departure Monitoring System with Automatic Routing
 - RSA (Road Sign Assist) Recognition system of traffic signs
 - LTA (Lane Trace Assist) System for keeping vehicle in the center of a lane
 - Adaptive Cruiser Control with speed adjustments

* Android car application is not yet available in Serbia



START A REVOLUTION
AN UNAPOLOGETIC INTRODUCTION
TO THE TOYOTA C-HR



Black fabric with light grey stitching



17" silver alloy wheels
(5-double-spoke)



C-LUB



MAKE A STATEMENT
SET THE STANDARD WITH PLENTY
OF EXTRA FEATURES



Black fabric with light blue stitching



18" black machined-face alloy wheels (5-double-spoke)

GRADE (ADDITIONALLY TO C-ENTER GRADE):

- C-LUB alloy wheels 18"
- Vehicle roof in black color
- Extra tinted rear windows
- Heated front seats
- Ambient lighting
- Parking sensors (combined with automatic gear or hybrid with function of automatic braking (ICS))
- Smart Entry & Push Start - automatic system of unlocking and starting the vehicle by pressing the Start button

Optional equipment:

— **ASSIST pack:**

- Navigation
- Bi-LED headlights with manual beam height adjustment
- LED combined rear lights (rear, braking and reverse light)
- LED front fog lights
- LED rear turning signals
- BSM (Blind Spot Monitor) blind spot recognition system
- RCTA - Rear Cross Traffic Alert (RCTA) blind spot detection system when moving the vehicle backwards. In combination with automatic transmission or hybrid drive with automatic braking function (RCTB)
- Lighting when approaching a vehicle marked C-HR

— **ALCANTARA package (in combination with hybrid drive and Navigation or Assist pack):**

- Interior - combined leather and Alcantara
- Electrical adjustment of the driver's seat
- Heated steering wheel

— **LEATHER package (in combination with 1.2L engine and Navigation or Assist pack):**

- Leather interior
- Electrical adjustment of the driver's seat
- Heated steering wheel



GR SPORT

GRADE (ADDITIONALLY TO C-LUB GRADE):

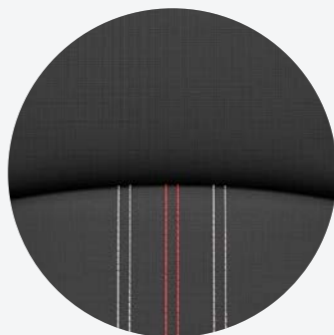
- GR SPORT 19 "alloy wheels
- Tires 225/45 R19
- Projector Bi-LED headlights with manual beam height adjustment
- LED combined rear lights (rear, brake and reverse light)
- LED front fog lights
- LED rear turn signals
- GR SPORT leather steering wheel
- GR SPORT Interior
- NanoeTM air ionizer

Optional equipment (PREMIUM pack):

- Navigation
- JBL sound system with 9 speakers
- BSM (Blind Spot Monitor) blind spot recognition system
- RCTB - Rear Cross Traffic Alert with brake assist. Blind spot detection system when moving the vehicle backwards with automatic braking function.
- Alcantara Interior
- Heated steering wheel
- Electric driver's seat adjustment
- Dynamic headlights (following the turn of steering wheel) with automatic height adjustment (AFS)



STAND OUT WITH SPORTY, REFINED STYLE



Black Alcantara® with black leather bolsters and silver & red stitching



19" black machined-face alloy wheels (5-double-spoke)



C-HIC

- GRADE (ADDITIONALLY TO C-LUB GRADE):**
- Projector Bi-LED headlights with manual beam height adjustment
 - LED combined rear lights (rear, brake and reverse light)
 - LED front fog lights
 - LED rear turn signals
 - Navigation
 - C-HIC Interior in a combination of leather and fabric with brown details
 - Dark Brown center console
 - Nanoe™ air ionizer

OPTIONAL EQUIPMENT:

- **TECH pack:**
 - Dynamic headlights (following the turn of steering wheel) with automatic height adjustment (AFS)
 - BSM (Blind Spot Monitor) blind spot recognition system
 - RCTA - Rear Cross Traffic Alert (RCTA) blind spot detection system when moving the vehicle backwards. In combination with automatic transmission or hybrid drive with automatic braking function (RCTB)
 - Lighting when approaching a vehicle marked C-HR
- **LEATHER pack: (in combination with Tech pack):**
 - Leather Interior
 - Electrical adjustment of the driver's seat
 - Heated steering wheel



COMPROMISE IS NOT YOUR STYLE
NEXT LEVEL LUXURY THAT
COMES AS STANDARD



Orchid leather seat with black perforated leather insert



18" dark chrome alloy wheels (10-double-spoke)

SUV ATTITUDE ENHANCE YOUR URBAN CREDIBILITY



UNDERRUN – FRONT, SIDE AND REAR

Always stylish, no matter how minor the detail. Take the underrun protectors for example, an ideal combination of protection and style. They preserve the premium look by protecting the front, side and rear areas that are vulnerable to getting scratched.



CHROME ELEMENTS

Eye-catching chrome detailing added to your front fog lamps.

Contoured chrome side sills that integrate smoothly with the side of your car, creating a powerful low profile.

The rear chrome garnish adds a subtle touch of pure sophistication.



MAKSIMALNO UGODAN TRANSPORT



PODLOGA ZA PRTLJAŽNIK

Daje vam mogućnost izbora izgleda i zaštite vašeg prtljažnika. Okrenite je za drugačiju zaštitu. Podloga je čvrsta, praktična i laka za održavanje.



1. GUMENA PATOSNICA PRTLJAŽNIKA obezbeđuje zaštitu od prljanja i prosipanja. Njen jedinstveni dizajn obezbeđuje zaštitu od klizanja i sprečava pomeranje prtljaga.



2./3. HORIZONTALNA ILI VERTIKALNA MREŽICA ZA PRTLJAG

Čvrsta, pletena, crna najlonska mrežica koja čvrsto drži na mestu vaš prtljag. Lako se pričvršćuje za predviđene kuke.



DRŽAČ ZA BIKIKL

Točkovi se pričvršćuju za profil i na taj način bicikl bezbedno stoji u uspravnom položaju.



DODATNI PROSTOR ZA SKIJAŠKU

OPREMU koji ima veliki smeštajni kapacitet, dizajniran specijalno za skijašku opremu. Može se otvoriti sa obe strane. Za dodatnu bezbednost, centralni ključ ne može biti uklonjen dok se sve brave ne zaključaju.



DRŽAČ ZA SKIJE I SNOWBOARD

Odlikuje se dodatnom širinom, jednostavan za upotrebu, nosač za 5-6 pari skija (u zavisnosti od veličine skija), ili 4 snowboard-a.

MONTAŽNI KROVNI NOSAČ

obe komponente se jednostavno montiraju i demontiraju. Idealan dodatak za komforna putovanja.

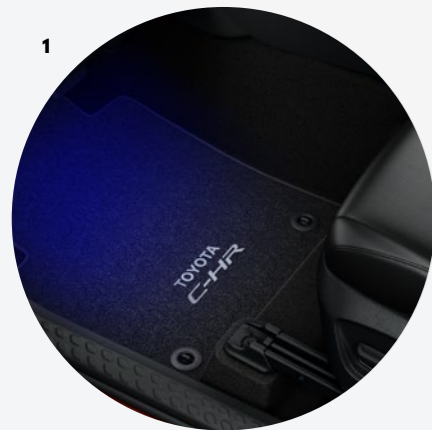
ZAŠTITA DUGOTRAJNA VOŽNJA



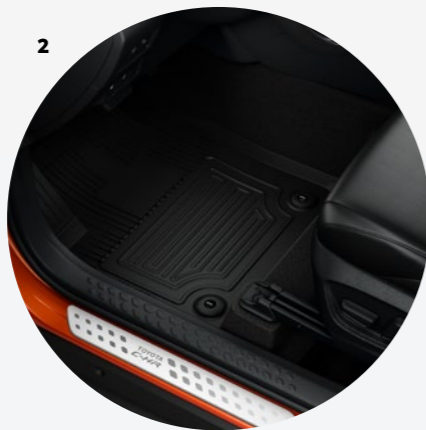
BOČNE LAJSNE, DEFLEKTORI VETRA ZA HAUBU I PROZORE, ŠTITNICI OD BLATA

Ogrebotine, sitni udarci ili nečistoća više nisu opasnost. Zaštitite svoj Toyota C-HR kako biste duže u njemu uživali. Svi dodaci se uklapaju u aerodinamičnu siluetu.

1



2



1. OSVETLJENJE U PODNOŽJU SEDIŠTA

Stilski dodatak osvetljenja podnožja sedišta. Svetlo se automatski uključuje čim se otvore bilo koja vrata.

1. TEKSTILNE PATOSNICE

Patosnice izrađene od velura. Izdržljive su, praktične i jednostavne za održavanje. Mogu se pričvrstiti, kako se ne bi pomerale tokom vožnje.

2. GUMENE PATOSNICE

Originalne gumene patosnice čuvaju tekstilne podove vašeg automobila od nečistoća, koje vi ili vaši saputnici možete uneti u automobil tokom lošeg vremena. Ne propuštaju nečistoće, blato i vodu i lako se skidaju radi pranja.

2. UKRASNA LAJSNA

Ukrasne lajsne od prefarbanog nerđajućeg čelika čine idealnu kombinaciju stila i zaštite vaših pragova.



ŠTITNIK ZADNJEG BRANIKA

Izrađen od nerđajućeg čelika ili plastike i dizajniran da zaštiti boju na zadnjem braniku od grebanja prilikom utovara teškog i gabaritnog tereta.

Takođe štiti i boju u samom prtljažniku.



ZAŠTITNI FILM ZA ZADNJI BRANIK

Štiti boju na zadnjem braniku od sitnih ogrebotina prilikom utovara ili istovara tereta.

Izrađen je od čvrstog prozirnog samolepljivog materijala i dizajniran je da savršeno prijanja uz branik vozila.



MIX IT UP,
BE BOLD



1K3*
Celestite Grey

8X2*
Hydro Blue

040
Pure White

070[§]
Pearl White

3U5[§]
Flame Red

209*
Night Sky Black

1G3*
Ash Grey

1K0*
Metal Stream

4R8*
Orange

6X1*
Oxide Bronze

CHANGE
PERSPECTIVE,
BE DISTINCT



1. 2MQ Pure White with black roof
2. 2NA Pearl White[§] with black roof
3. 2NB Ash Grey* with black roof
4. 2VF Dynamic Grey* with black roof
5. 2NK Metal Stream* with black roof
6. 2NH Hydro Blue* with black roof

7. 2TB Flame Red* with black roof
8. 2TC Orange Spice* with black roof
9. 2TH Celestite Grey* with black roof
10. 2TJ Celestite Grey* with Metal Stream roof
11. 2TA Night Sky Black* with Metal Stream roof

* Metallic paint.

[§] Pearlescent paint.

IT'S THE DETAILS THAT COUNT



1. 17" silver alloy wheels (5-double-spoke) Standard on C-ENTER
2. 18" black machined-face alloy wheels (5-double-spoke) Standard on C-LUB
3. 18" dark chrome alloy wheels (10-double-spoke) Standard on C-HIC
4. 18" matt black alloy wheels (10-double-spoke) Standard on ORANGE EDITION
5. 19" black machined-face alloy wheels (5-double-spoke) Standard on GR SPORT



1. Black fabric with light grey stitching Standard on C-ENTER
2. Black fabric with light blue stitching Standard on C-LUB
3. Orchid quilted fabric with leather inserts Standard on C-HIC
4. Black perforated Alcantara with leather inserts - Optional on C-LUB
5. Black perforated leather with diamond pattern Standard on ORANGE EDITION, optional on C-LUB & C-HIC
6. Black Alcantara® with black leather bolsters and silver & red stitching Optional on GR SPORT
7. Black fabric with silver & red stitching Standard on GR SPORT

ENVIRONMENTAL PERFORMANCE		
	Hybrid 2.0 l Petrol Hybrid e-CVT	Hybrid 1.8 l Petrol Hybrid e-CVT
Fuel consumption (regulation EC 2017/1153 as amended EC 2017/1231)		
Combined speeds (l/100km)	5.2-5.7	4.8-5.2
Low speed (l/100km)	4.8-5.3	4.0-4.4
Medium speed (l/100km)	4.3-4.8	3.8-4.2
High speed (l/100km)	4.7-5.0	4.3-4.7
Extra high speed (l/100km)	6.4-6.8	6.1-6.5
Recommended fuel grade	95 or higher	95 or higher
Fuel tank capacity (litres)	43	43
Carbon dioxide, CO ₂ (regulation EC 2017/1153 as amended EC 2017/1231)		
Combined speeds (g/km)	119-128	109-118
Low speed (g/km)	109-120	91-101
Medium speed (g/km)	98-108	87-95
High speed (g/km)	105-113	97-106
Extra high speed (g/km)	146-155	139-147
Exhaust emissions (regulation EC 715/2007 complemented by EC 2018/1832AP)		
Euro class	EURO 6 AP	EURO 6 AM
Carbon monoxide, CO (mg/km)	190.5	69.8
Hydrocarbons, THC (mg/km)	19.9	11.0
Hydrocarbons, NMHC (mg/km)	17.2	8.7
Nitrogen Oxides, NOx (mg/km)	4.9	3.6
Smoke particulates (mg/km)		
Sound level drive by (dB(A))	65.0	66.7

The fuel consumption and CO₂ values are measured in a controlled environment on a representative production model, in accordance with the requirements of the new WLTP European Regulation EC 2017/1151 and its applicable amendments. For each individual vehicle configuration, the final fuel consumption and CO₂ values may be calculated based on the ordered optional equipment. The fuel consumption and CO₂ values of your vehicle may vary from those measured or calculated values, as driving behaviour as well as other factors (such as road conditions, traffic, vehicle condition, tyre pressure, load, number of passengers, etc.) have an influence on a car's fuel consumption and CO₂ emissions. For more information regarding the new WLTP test method, please visit: <https://www.toyota-europe.com/world-of-toyota/feel/environment/worldwide-harmonized-light>

PERFORMANCE		
Maximum speed (km/h)	180	170
0-100 km/h (secs)	8.2	11.0
Drag coefficient	0.32	0.32

ENGINE		
	Hybrid 2.0 l Petrol Hybrid e-CVT	Hybrid 1.8 l Petrol Hybrid e-CVT
Engine code	M20A-FXS	2ZR-FXE
Number of cylinders	4, in line	4, in line
Valve mechanism	16-valve DOHC, chain drive (with VVT-iE and VVT-i)	16 valve DOHC, chain drive (with VVT-i)
Fuel system	SFI	SFI
Displacement (cc)	1987	1798
Bore x stroke (mm x mm)	80.5 x 97.6	80.5 x 88.3
Compression ratio	14.0:1	13.0:1
Maximum power output (DIN hp)	152	98
Maximum power output (kW/rpm)	112/6000	72/5200
Maximum torque (Nm/rpm)	190/4400-5200	142/3600
Total hybrid system combined output (DIN hp)	184	122
Total hybrid system combined output (kW)	135	90

2.0 L PETROL HYBRID E-CVT ELECTRIC FRONT MOTOR		HYBRID VEHICLE BATTERY	
Type	Permanent magnet motor	Type	Nickel metal hydride
Maximum output (kW)	80	Nominal voltage (V)	216.0
Maximum torque (Nm)	202	Number of battery modules	180
Maximum voltage (V)	650	Battery capacity (3 hr) amp. hr.	6.5

1.8 L PETROL HYBRID E-CVT ELECTRIC FRONT MOTOR		HYBRID VEHICLE BATTERY	
Type	Permanent magnet motor	Type	Lithium-ion
Maximum output (kW)	53	Nominal voltage (V)	207.2
Maximum torque (Nm)	163	Number of battery modules	56
Maximum voltage (V)	600	Battery capacity (3 hr) amp. hr.	3.6

e-CVT = electronically controlled Continuously Variable Transmission M/T = Manual transmission

WEIGHTS & TOWING CAPACITY	Hybrid	Hybrid
	2.0 l Petrol Hybrid e-CVT	1.8 l Petrol Hybrid e-CVT
Total gross vehicle mass (kg)	2655	2585
Kerb weight (kg)	1485-1525	1420-1460
Towing capacity with brakes (kg)	725	725
Towing capacity without brakes (kg)	725	725

SUSPENSION

Front	MacPherson strut	MacPherson strut
Rear	Double wishbone	Double wishbone

BRAKES

Front	Ventilated disc	Ventilated disc
Rear	Disc	Disc

EXTERIOR DIMENSIONS

5-door	
Exterior length (mm)	4390 / 4395*
Exterior width (mm)	1795
Exterior height (mm)	1555 / 1565 [§]
Front tread (mm)	1540 ^º / 1550
Rear tread (mm)	1550 ^º / 1560
Front overhang (mm)	935
Rear overhang (mm)	815 / 820*
Wheelbase (mm)	2640

INTERIOR DIMENSIONS

Interior length (mm)	1800	1800
Interior width (mm)	1455	1455
Interior height (mm)	1210	1210

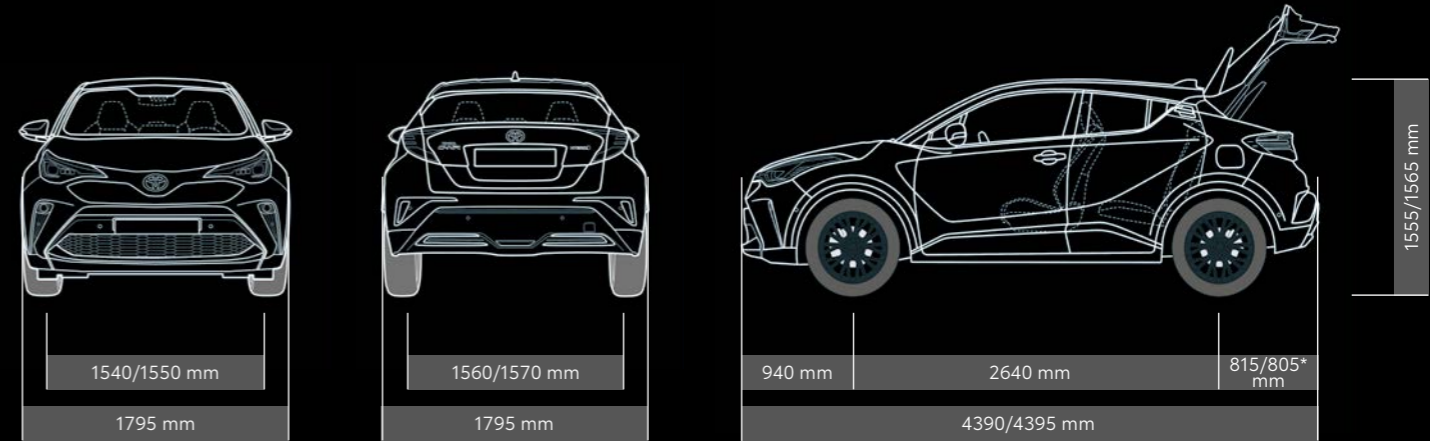
LOAD VOLUME

5-door	
Luggage capacity (5 seats up; up to belt line) (litres)	358* / 377
Luggage capacity (2 seats up; up to roof) (litres)	1102* / 1164

STEERING

Turning circle – tyre (m)	10.4
---------------------------	------

● = Standard ○ = Optional – = Not Available
e-CVT = electronically controlled Continuously Variable Transmission
* 2.0 l Petrol Hybrid. § 1.2 l Turbo Petrol. º with 18" wheels.
M/T = Manual transmission



TOYOTA 2050 ENVIRONMENTAL CHALLENGE & EFFICIENCY AND LOW EMISSIONS.

At Toyota, we want to go beyond zero environmental impact and leave the world in a better place than we found it. To make that happen, we have set ourselves six challenges to complete by 2050. Each one throws up its own difficulties, but we are committed to generating a positive and sustainable impact on society and the natural world as a whole.

For more information regarding Toyota Environmental Challenge please visit:
<https://www.toyota-europe.com/world-of-toyota/feel/environmental-sustainability>
 or contact your local Toyota retailer.



CHALLENGE 1 NEW VEHICLE ZERO CO₂ EMISSIONS

By 2050, we want to reduce the CO₂ emissions from our vehicles by 90% compared to our 2010 levels. To achieve this, we will promote the development of new vehicles with low or zero carbon emissions, and do everything we can to increase the uptake of these vehicles.



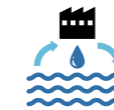
CHALLENGE 2 LIFE CYCLE ZERO CO₂ EMISSIONS

We are working to create more environmentally friendly designs – and then analysing and refining them to ensure the lowest possible environmental impact throughout the vehicle's entire life cycle*.



CHALLENGE 3 PLANT ZERO CO₂ EMISSIONS

To reduce carbon emissions at our manufacturing plants, we are focusing on improving the technologies we use and switching to alternative power sources. We are committed to making our facilities more energy-efficient and adopting renewable energy sources such as solar and wind, as well as low-carbon power such as hydrogen energy.



CHALLENGE 4 MINIMISING AND OPTIMISING WATER USAGE

To minimise water usage we have started to collect rainwater at our manufacturing plants. We have also developed purification methods so that the water we do use can either be used again or returned safely into the local supply.



CHALLENGE 5 ESTABLISHING A RECYCLING-BASED SOCIETY AND SYSTEMS

We've been working on the challenge of resource recycling for 40 years, with the result that 95% of every Toyota C-HR is now reusable and recoverable. In addition, we offer new and innovative ways of returning your vehicle when it eventually reaches 'the end of the road'.



CHALLENGE 6 ESTABLISHING A FUTURE SOCIETY IN HARMONY WITH NATURE


To preserve and enhance our co-existence with the natural world, we are organising reforestation and tree planting, green urban schemes and other environmental initiatives, both at our own sites and in the wider world. Our aim is to establish a society where people and nature coexist in harmony.



* Toyota's LCA methodology, which is applied to our passenger vehicles, was reviewed and approved by TÜV Rheinland and has been certified to comply with ISO14040/14044 standards.



The Toyota C-HR is built to the highest quality standards at TMMT in Sakarya, Turkey.



YOUR COMPLETE PEACE OF MIND WITH TOYOTA

PEACE OF MIND

HYBRID SERVICE PROGRAMME

Hybrid Battery Extra Care cover* on an annual/15,000 km basis (whichever comes sooner) up to the 10th year from vehicle registration date.

QUALITY SERVICE

Your Toyota will need a Health & Safety check at least once every 2 years/30,000 km (whichever comes sooner). An intermediate check is necessary every year or 15,000 km.

LOW MAINTENANCE COSTS

All Toyota vehicles are designed and engineered to minimise your maintenance costs.

GENUINE PARTS

Providing the reassurance of Toyota quality, only genuine and approved components are used on your vehicle.

COMPREHENSIVE WARRANTY

Every new Toyota comes with a 3-year/100,000 km vehicle warranty[§], which covers any defect caused by a manufacturing fault[§].

ADDED SECURITY

Toyota's comprehensive security system withstands the insurance industry's rigorous 5-minute attack test.

TOYOTA EURO CARE

Enjoy peace of mind driving with complimentary Toyota Eurocare roadside assistance in 40 European countries for 3 years**.

GENUINE ACCESSORIES

Toyota accessories are designed and manufactured with the same care, quality and attention to detail as Toyota vehicles. All accessories are covered by a 3-year warranty when purchased together with the vehicle[§].

For more information on peace of mind visit: www.toyota-europe.com/service-and-accessories

* Check with your retailer for specific Toyota Hybrid Service Programme details. [§] Check with your retailer for specific warranty details. [§] Transport to the nearest authorised Toyota repairer will also be covered. In addition the 3-year/unlimited mileage paint warranty protects against defects and surface rust caused by a manufacturing fault. Every new Toyota is covered by a 12-year anti-corrosion (not valid for commercial vehicles) warranty against perforation of body panels caused by a manufacturing fault in materials or workmanship. ** Belgium 5 years/Portugal and Denmark 1 year.



THE NEW TOYOTA C-HR HYBRID **LEAVE ORDINARY BEHIND**

To the best of our knowledge, all information in this brochure is correct at time of going to print. Details of specifications and equipment provided in this brochure are subject to local conditions and requirements and may, therefore, vary from models available in your area. Please enquire with your local retailer for details on your local specifications and equipment. • Vehicle body colours may differ slightly from the printed photographs in this brochure. • Toyota Motor Europe reserves the right to alter any details of specifications and equipment without prior notice. • © 2020 by Toyota Motor Europe NV/SA ('TME'). • No part of this publication may in any way be reproduced without the prior written approval of Toyota Motor Europe.