



HIGHLANDER

GO BIG. GO HYBRID.

What if it's possible to have it all? The new Toyota Highlander is a Hybrid that offers the best of both worlds. It has the power to cruise at speed on long motorway road trips, but low CO₂ emissions for inner-city traffic. It handles outstandingly, performing equally well on steep mountain climbs as urban commutes. Its streamlined design makes a serious style statement, while a luxurious interior comfortably fits the whole family – with adaptable storage space for any luggage requirements. Imagine a car without compromise. Imagine the Toyota Highlander Hybrid.



CONTENTS

4-5	Everyday Hybrid Drive
6-7	Touring Hybrid Drive
8-9	Interior
10-11	Interior highlights
12-13	Interior comfort
14-15	Space on demand
16-17	Safety
18-19	Elegant grade
20-21	Executive grade
22-23	Premium grade
24-27	Accessories
28-29	Body colours
30-31	Trims and wheels
32-35	Specifications
36-37	Environment
38-39	Peace of mind



FOR EVERY DRIVE. FOR EVERY DRIVER.

The world is changing fast. So is the way we travel. The Toyota Highlander embodies this adaptable spirit, thanks to the options its 2.5 litre Hybrid Dynamic Force engine gives. Choose how you drive with NORMAL, ECO and SPORT modes, all with their own performance personality to suit you. Each of these drive modes can be combined with EV mode for a 0 emissions ride*. The Highlander Hybrid goes above and beyond its class, allowing you to customise and maximise the efficiency of your drive.

Whichever mode you choose, you'll find acceleration, power and responsiveness, as well as a quiet and comfortable ride.

HYBRID

2.5 L TNGA PETROL HYBRID AWD-I

Power 248 KS / 182 kW

Fuel consumption[§] 6.6–7.1 l/100 km

CO₂ emissions[§] 149–160 g/km

Acceleration 0–100 km/h 8.3 seconds

* Depending on battery charge and driving conditions.

[§] Combined cycle.

DRIVE WITH HYBRID POWER. DRIVE YOUR WAY.

Life is a journey of constant discovery. Whether your adventure is planned or spontaneous, the Toyota Highlander is the ultimate companion. The open road is there to be conquered, and so too is trickier terrain. The new 2.5 litre Hybrid Dynamic Force engine is powerful enough to pull a 2T trailer and is combined with an AWD-i system that automatically kicks into action whenever needed – from pulling away from a stationary position to navigating low-grip conditions such as ice and snow. By engaging an additional rear electric motor independent to the main one, it distributes additional driving force to the rear wheels, suppressing front wheel slip. It even works to reduce understeer, helping the Highlander glide confidently around corners.









DRIVE IN STYLE. DRIVE IN COMFORT.

True craftsmanship is about details; little touches that make a big difference. Inside the Toyota Highlander that means luxurious leather seats, the height of comfort, with built-in heating and cooling functionality to ensure driver and passengers are always comfortable. For the driver, the elevated seating position gives a view of the whole road. The impressive 12.3" multimedia display shows everything you could possibly need, from navigation to your favourite playlist, all easily readable while driving. As the day draws to a close, ambient blue LED lighting illuminates the interior so that everything you need is visible and at your fingertips. It's the perfect blend of style and substance.



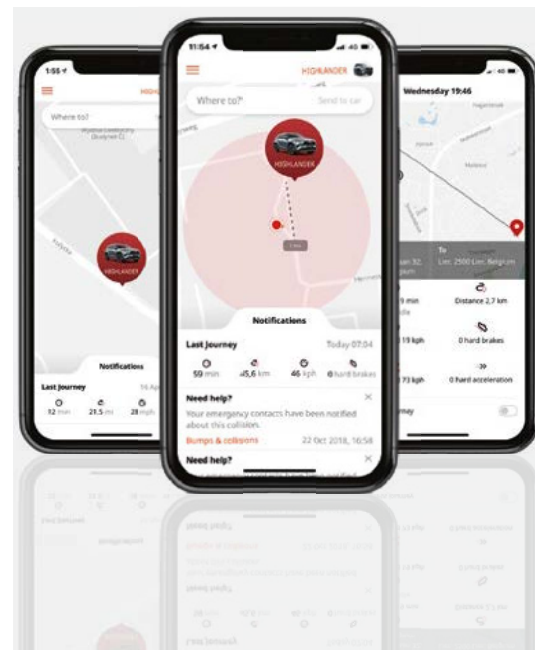
12.3" multimedia display

With Apple CarPlay™ and Android Auto™ as standard, connecting your phone is easy. You'll always be in control of what's next – all accessible via the 12.3" multimedia touchscreen.



Wireless phone charging

With a wireless charging pad in the centre console, all you need to do is place your smartphone down to regenerate its battery while you drive.



MyT Connectivity

Hybrid Coaching helps you optimise your EV driving, while speed camera warnings look out for you. Connect your phone to enjoy apps directly via the Highlander's infotainment screen.

CONNECTED WORLD. CONNECTED DRIVING.

Innovation moves our world forward. The new Toyota Highlander is full of technology that not only improves your driving experience, but integrates with everyday life too. Simply connect your Apple or Android phone, then control everything from calls to your favourite playlists and navigation via the 12.3" touchscreen. Take driving to the next level with the MyT app, which coaches your hybrid driving and offers insights to help you improve. It even helps you find where you parked. With the new Toyota Highlander, you have everything you need to power your next adventure.



Head Up Display and TFT screen

Display useful information using the Highlander's Head Up Display, from speed to turn-by-turn navigation and EV driving range. You'll never need to take your eyes off the road.



Smart view mirror

Real-time images from a high-definition camera mounted high on the back window ensure an unobstructed view even when your boot is packed to the roof.

SPACE FOR SEVEN. SPACE FOR LIFE.

Any journey is as much about the company you keep as the places you visit. Keeping everyone happy naturally makes the experience all the better. The Toyota Highlander carries up to seven people in comfort and style, with generous leg room wherever they sit and an incredible panoramic roof that grants views and a spacious feeling for all. With 3-zone automatic air conditioning, temperature can be operated in driver, passenger and rear zones, ensuring all passengers will be as warm or cool as they would like to be. In the front and second rows, heated seats grant even more control. Individual storage spaces and USB charging points will keep everyone entertained throughout the journey.







VERSATILE INTERIOR. VERSATILE LIVING.

The Toyota Highlander's interior can adapt to whatever you need to carry. If seven people are in the car, a 332*-litre boot provides ample room for everyone's belongings. Fold down the back row, and that expands to 865* litres (5-seat configuration). Fold down the second row too, and the result is an astonishing 1909* litres of storage (2 seat configuration). After sensing your Smart Key, the large rear doors open automatically when you wave your foot under the bumper. And a panoramic glass roof with powered retractable sunshade allows you to let as much or little natural light in as you like.

* Up to roof, including under deck storage space.

Space on demand

Whatever your needs, wherever you're going, Highlander offers a variety of seating configurations.



7 seats 332* litres



5 seats 865* litres



2 seats 1909* litres

INTELLIGENT DRIVING. INTELLIGENT SAFETY.

Toyota Safety Sense features the latest technologies designed to prevent the most common types of accident. Take its Pre-Collision System, which consists of Forward Collision Warning, Pre-collision Brake Assist, Autonomous Emergency Braking and Emergency Steering Assist to enhance steering in event of potential collision. A recent upgrade to the system delivers additional safety at junctions, thanks to the new Intersection Turn Assistance function. The Highlander can even detect danger approaching from behind and take action if a rear collision looks possible.

Speed and Lane Keeping Assistance functions make the driving experience more comfortable. Intelligent Adaptive Cruise Control, comprised of Full Range Adaptive Cruise Control and Road Sign Assist, adapts cruising speed to match speed indicated by traffic signs. Other functions, such as Lane Trace Assist including Lane Departure Alert with Steering Control help to keep you on track and centred in the lane. In addition, Automatic High Beam provides better night-time visibility.

Panoramic View Monitor

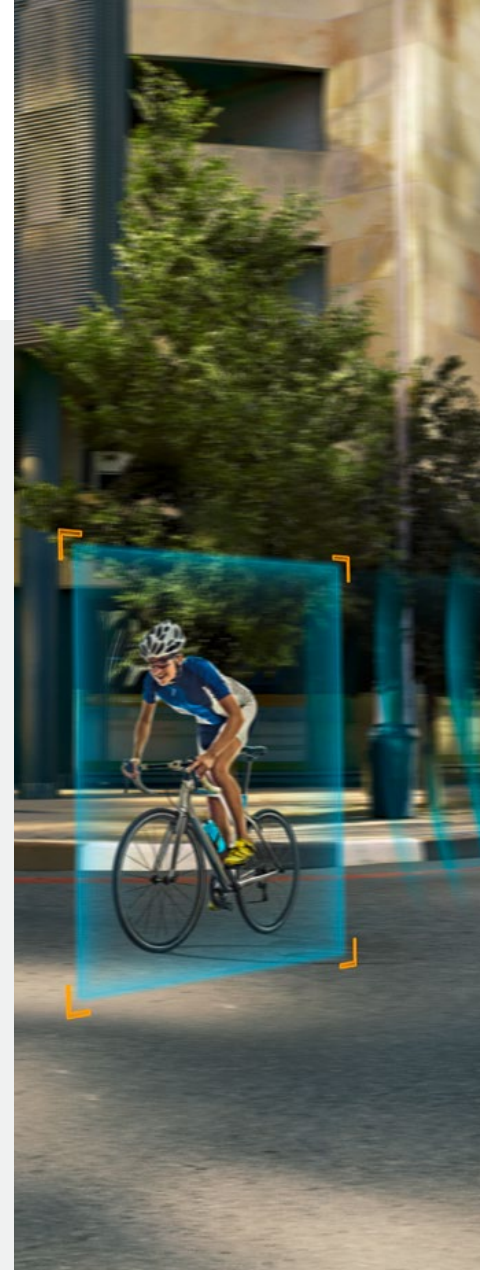
Helps to make parking safer and easier. It combines images from four cameras to create a near 360° 3D view of the surroundings. Displayed clearly on the Toyota Touch® 2 multimedia system screen, the driver can choose from two viewing modes: Moving View and See-through View.

Rear Cross Traffic Alert with automatic braking

Allows you to reverse out of a parking space safely by detecting other vehicles approaching your blind spot area. RCTA alerts you with a buzzer and flashing indicators on the outer mirrors. If the driver fails to brake in time, the brakes automatically engage to prevent or mitigate a collision.

Blind Spot Monitor

Allows you to manoeuvre more safely during lane changes. If the rear-mounted radar sensors detect a vehicle in your side or rear blind spot, a warning indicator illuminates on the appropriate side mirror. If you indicate to change lanes and a vehicle is in your blind spot, the warning indicators will flash.





ELEGANT



STANDARD EQUIPMENT:

TOYOTA SAFETY SENSE® (ADVANCED ACTIVE SAFETY PACKAGE)

- PCS (Pre-Collision System) System collision warning and automatic braking in the event of collisions with pedestrian recognition (day and night) and cyclists (day) with active support to avoid collisions; The system recognizes vehicles from the opposite direction and pedestrians when turning at an intersection.
- LDA (Lane Departure Alert) Lane Departure Monitoring System with Automatic Routing
- RSA (Road Sign Assist) Traffic Sign Recognition System
- AHB (Auto High Beam) System for automatic switching of high and low beams
- ACC (Adaptive Cruise Control) Cruise control with radar speed adjustment and RSA connectivity
- LTA (Lane Trace Assist) A system to assist the vehicle in the lane when the ACC is on

MAIN CHARACTERISTICS

- 18" alloy wheels
- Bi-LED headlights
- LED daytime running lights
- Toyota Touch 2,8" (20.3 cm) color touch screen
- Smart Entry & Push Start - automatic system of unlocking and starting the vehicle by pressing the Start button
- BSM (Blind Spot Monitor) blind spot recognition system
- RCTA - Rear Cross Traffic Alert (RCTA) blind spot detection system when moving the vehicle backwards
- Automatically regulated all-wheel drive AWDi

Interior fabrics and finishes

Model shown is Elegant grade with black leather-style seats with 7" screen for information display and 6 speakers.



EXECUTIVE



STANDARD EQUIPMENT (ADDITIONALLY TO ELEGANT)

- Alloy wheels 20"
- Parking sensors with ICS (Intelligent Clearance Sonar) function
- Projector Bi-LED headlights
- Navigation
- Superior JBL sound system with 11 speakers
- Leather seats
- Driver's seat with memory function
- Electrically adjustable front passenger seat
- Rear view camera with dynamic guide lines and washing function
- Electric tailgate opening and closing (remote control)
- RCTB - Rear Cross Traffic Alert with brake assist. Blind spot detection system when moving the vehicle backwards with automatic braking function.

Interior fabrics and finishes

Model shown is Executive grade with black leather seats with Toyota Touch® 2 with Go navigation system and JBL premium sound system.



PREMIUM



STANDARD EQUIPMENT (ADDITIONALLY TO EXECUTIVE)

- Panoramic sunroof with the possibility of opening
- Toyota Touch 2, 12.3" (31.2 cm) color touch screen
- Perforated leather seats
- Cooled front seats
- Heated seats in the 2nd row
- Panoramic View Monitor (PVM): 4 camera system that allows 360 view around the vehicle and a view from a bird's eye perspective
- Interior mirror with digital rear view camera function
- HUD (Head Up Display) color information display with projection on the windshield
- Tailgate opening system (with leg movement)

Interior fabrics and finishes

Model shown is Premium grade with black leather seats with panoramic moon roof and 12.3" multimedia display.



TRANSPORT IN STYLE.

Whatever your lifestyle, Toyota has the perfect accessory for the job. Each one is designed to function perfectly and to complement your Highlander's looks.

Cross bars

These aerodynamic, lockable cross bars click easily into the roof rails on your Highlander. They can be used with a wide range of other attachments.

Side step

The side step gives you easy access to the roof accessories while enhancing the rugged appeal of your car.





Wind deflector

Aerodynamically shaped to reduce in-cabin wind noise and buffering when driving with open windows.



Aluminium scuff plates Hybrid

Protect your sill paintwork from scratches, scrapes and marks, while adding an aesthetic edge, with aluminium scuff plates.



Bike holder

Safely take your bike on the roof. Lockable on both bicycle and roof rack and can be installed on both sides of your Highlander.



Detachable towing hitch

Lets you make full use of your car's powerful towing capacity. The hook can be removed when not required.



Ski and snowboard holder

Easy to use ski holder for 6 pair of skis or 2 snowboards. Your equipment is securely fastened between 2 rubber profiles.



Ski box – glossy black

High capacity yet streamlined design especially for winter sports holidays. Can be opened on both sides.

PROTECTION WITH COMFORT.

Toyota's protection accessories give you the perfect plan of attack to avoid scratches and grime. Keeping your Highlander in mint condition.

Please find the complete accessory range at your Toyota's retailer website.





Hood Deflector

Custom designed to match the aerodynamic contours of your vehicle and work by diverting airflow, it also provides your vehicle with an extra layer of protection to help guard the bonnet of your vehicle against minor bumps and scrapes.



Textile floor mats Hybrid

Stylishly protect your car's cabin carpets. Safety fixings hold the driver's mat firmly in place.

... or use rubber floor mats

For protection against the very worst conditions. Impervious to dirt, mud and water.



Door edge protector

Protects vertical door edges against impact that might cause a damage to the metal or paintwork of your car's door.

Door handle protection film

Prevent minor scratching of the paintwork around your car's door handles.



Boot mat

The carpeted boot mat gives you choices for the appearance and protection of your boot. Tough, practical and easy to clean.



Horizontal cargo net

Keep your small or moving luggage safe in the boot.



Zavjesice za zaštitu od blata

Osmišljene tako da sprečavaju prskanje vode, blata i kamenčica po karoseriji iza prednjih i stražnjih kotača.

BODY COLOURS.

First impressions count, and the Toyota Highlander's bold design makes a style statement wherever you go. Choose from a range of suave pearlescent or metallic colour options to truly stand out from the crowd, from Tokyo Red to Midnight Blue.



* Pearlescent paint.

[§] Metallic paint.

1J9 Celestial Silver^s



218 Attitude Black^s



4X9 Ebony^s



1K5 Moondust^{*}



3T3 Tokyo Red^{*}



8X8 Midnight Blue^s



TRIMS AND WHEELS.



**Black perforated leather with
diamond pattern and black
stitching**
Standard on Premium



**Graphite perforated leather
with diamond pattern and
black stitching**
Standard on Premium



**Black leather with stitched
pattern and black stitching**
Standard on Executive



**Graphite leather with stitched
pattern and black stitching**
Standard on Executive



**Black leather-like trim with
black stitching**
Standard on Elegant



20" machined-face alloy wheels (10-spoke)
Standard on Premium



20" alloy wheels (5-triple-spoke)
Standard on Executive



18" dark grey machined-face alloy wheels (5-spoke)
Standard on Elegant



18" machined-face alloy wheels (10-spoke)
Optional on all grades



20" machined-face alloy wheels (5-spoke)
Optional on all grades

SPECIFICATIONS.

Hybrid

ENVIRONMENTAL PERFORMANCE

2.5 l TNGA Petrol Hybrid e-CVT

Fuel consumption (applicable legislation)	
Combined speeds (l/100km)	6.6-7.1
Low speed (l/100km)	6.6-7.3
Medium speed (l/100km)	5.8-6.4
High speed (l/100km)	5.8-6.3
Extra high speed (l/100km)	7.7-8.1
Recommended fuel grade	95 or more (octane)
Fuel tank capacity (litres)	65
Carbon dioxide, CO ₂ (applicable legislation)	
Combined speeds (g/km)	149-160
Low speed (g/km)	150-165
Medium speed (g/km)	131-145
High speed (g/km)	131-140
Extra high speed (g/km)	173-182
Exhaust emissions (regulation EC 715/2007 complemented by EC 2018/1832AP)	
Euro class	EURO 6 AP
Carbon monoxide, CO (mg/km)	216.3
Hydrocarbons, THC (mg/km)	18.0
Hydrocarbons, NMHC (mg/km)	14.6
Nitrogen Oxides, NOx (mg/km)	6.7
Smoke particulates (mg/km)	0.24
Sound level drive by (dB(A))	68.0

The fuel consumption and CO₂ values are measured in a controlled environment on a representative production model, in accordance with the requirements of the new WLTP European Regulation EC 2017/1151 and its applicable amendments. For each individual vehicle configuration, the final fuel consumption and CO₂ values may be calculated based on the ordered optional equipment. The fuel consumption and CO₂ values of your vehicle may vary from those measured or calculated values, as driving behaviour as well as other factors (such as road conditions, traffic, vehicle condition, tyre pressure, load, number of passengers, etc.) have an influence on a car's fuel consumption and CO₂ emissions. For more information regarding the new WLTP test method, please visit: <https://www.toyota-europe.com/world-of-toyota/feel/environment/worldwide-harmonized-light>

Hybrid

2.5 l TNGA Petrol Hybrid e-CVT

ENGINE

Engine code	A25A-FXS
Number of cylinders	4 cylinder, in line
Valve mechanism	16-Valve DOHC, VVT-iE (Intake), VVT-i (Exhaust)
Fuel system	Fuel injection
Displacement (cc)	2487
Bore x stroke (mm x mm)	87.5 x 103.48
Compression ratio	14.0:1
Maximum power output (DIN hp)	190
Maximum power output (kW/rpm)	140/6000
Maximum torque (Nm/rpm)	239/4300-4500
Total hybrid system combined output (DIN hp)	248
Total hybrid system combined output (kW)	182

Electric motor front / rear

Type	Permanent magnet synchronous motor
Maximum output (kW)	134 / 40
Maximum torque (Nm)	270 / 121

Hybrid vehicle battery

Type	Nickel-metal hydride
Nominal voltage (V)	288
Battery capacity (3 hr) amp. hr.	6.5

Hybrid

2.5 l TNGA Petrol Hybrid e-CVT

PERFORMANCE

Maximum speed (km/h)	180
0-100 km/h (secs)	8.3

SUSPENSION

Front	MacPherson Strut
Rear	Trailing arm double wishbone

BRAKES

Front	Ventilated disc 2-cylinder
Rear	Ventilated disc 1-cylinder

SPECIFICATIONS.

Hybrid

2.5 l TNGA Petrol Hybrid e-CVT

WEIGHTS & TOWING CAPACITY

Total gross vehicle mass (kg)	4670* / 4720
Kerb weight (kg)	2015-2130
Towing capacity with brakes (kg)	2000
Towing capacity without brakes (kg)	700

EXTERIOR DIMENSIONS

5-door

Exterior length (mm)	4966
Exterior width (mm)	1930
Exterior height (mm)	1755
Front tread (mm)	1659
Rear tread (mm)	1662
Front overhang (mm)	988
Rear overhang (mm)	1128
Wheelbase (mm)	2850

INTERIOR DIMENSIONS

5-door

Interior length (mm)	2548
Interior width (mm)	1398
Interior height (mm)	1190 ⁸ / 1212

LOAD VOLUME

5-door

Luggage capacity (2 seats up; up to roof) (litres)	838
Luggage compartment length (5 seats up) (mm)	509
Luggage overall height (mm)	800
Luggage compartment length (2 seats up) (mm)	1176
VDA luggage capacity, up to tonneau cover, rear seat up (litres)	241

STEERING

5-door

Turning circle – tyre (m)	11.4
---------------------------	------

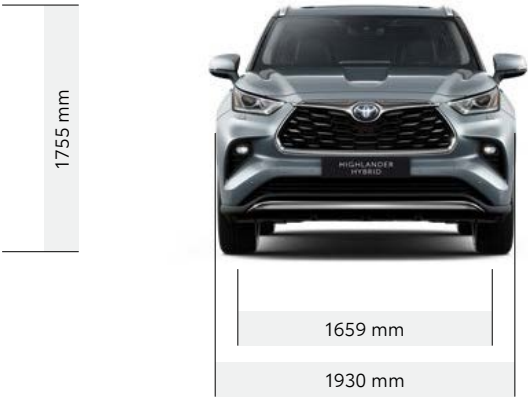
WHEELS

Elegant

Executive

Premium

18" dark grey machined-face alloy wheels (5-spoke)	●	–	–
20" alloy wheels (5-triple-spoke)	–	●	–
20" dark grey machined-face alloy wheels (10-spoke)	–	–	●
Black small centre caps	●	●	●
Temporary spare wheel	●	●	●



● = Standard ○ = Optional – = Not available * oprema Elegant § With panoramic moon roof.

TOYOTA 2050 ENVIRONMENTAL CHALLENGE & ENVIRONMENTAL LIFECYCLE POLICY.



At Toyota, we want to go beyond zero environmental impact and leave the world in a better place than we found it. To make that happen, we have set ourselves six challenges to complete by 2050. Each one throws up its own difficulties, but we are committed to generating a positive and sustainable impact on society and the natural world as a whole.

For more information regarding Toyota Environmental Challenge please visit:
www.toyota-europe.com/world-of-toyota/feel/environmental-sustainability or contact your local Toyota retailer.



CHALLENGE 1 NEW VEHICLE ZERO CO₂ EMISSIONS

By 2050, we want to reduce the CO₂ emissions from our vehicles by 90% compared to our 2010 levels. To achieve this, we will promote the development of new vehicles with low or zero carbon emissions, and do everything we can to increase the uptake of these vehicles.



CHALLENGE 4 MINIMISING AND OPTIMISING WATER USAGE

To minimise water usage, we have started to collect rainwater at our manufacturing plants. We have also developed purification methods so that the water we do use can either be used again or returned safely into the local supply.



CHALLENGE 2 LIFE CYCLE ZERO CO₂ EMISSIONS

We are working to create more environmentally friendly designs – and then analysing and refining them to ensure the lowest possible environmental impact throughout the vehicle's entire life cycle*.



CHALLENGE 5 ESTABLISHING A RECYCLING-BASED SOCIETY AND SYSTEMS

We've been working on the challenge of resource recycling for 40 years, with the result that 95% of every Toyota Highlander is now reusable and recoverable. In addition, we offer new and innovative ways of returning your vehicle when it eventually reaches 'the end of the road'.



* Toyota's LCA methodology, which is applied to our passenger vehicles, was reviewed and approved by TÜV Rheinland and has been certified to comply with ISO14040/14044 standards.



CHALLENGE 3

PLANT ZERO CO₂ EMISSIONS

To reduce carbon emissions at our manufacturing plants, we are focusing on improving the technologies we use and switching to alternative power sources. We are committed to making our facilities more energy-efficient and adopting renewable energy sources such as solar and wind, as well as low-carbon power such as hydrogen energy.



CHALLENGE 6

ESTABLISHING A FUTURE SOCIETY IN HARMONY WITH NATURE

To preserve and enhance our co-existence with the natural world, we are organising reforestation and tree planting, green urban schemes and other environmental initiatives, both at our own sites and in the wider world. Our aim is to establish a society where people and nature coexist in harmony.

YOUR COMPLETE PEACE OF MIND WITH TOYOTA.

HYBRID SERVICE PROGRAMME

Hybrid Battery Extra Care cover[§] on an annual/15,000 km basis (whichever comes sooner) up to the 10th year from vehicle registration date.

QUALITY SERVICE

Your Toyota will need a Health & Safety check at least once every 2 years/30,000 km (whichever comes sooner). An intermediate check is necessary every year or 15,000 km.

LOW MAINTENANCE COSTS

All Toyota vehicles are designed and engineered to minimise your maintenance costs.

GENUINE PARTS

Providing the reassurance of Toyota quality, only genuine and approved components are used on your vehicle.

COMPREHENSIVE WARRANTY

Every new Toyota comes with a 3-year/100,000 km vehicle warranty[§], which covers any defect caused by a manufacturing fault^{**}.

ADDED SECURITY

Toyota's comprehensive security system withstands the insurance industry's rigorous 5-minute attack test.

TOYOTA EURO CARE

Enjoy peace of mind driving with complimentary Toyota Eurocare roadside assistance in 40 European countries for 3 years^{§§}.

GENUINE ACCESSORIES

Toyota accessories are designed and manufactured with the same care, quality and attention to detail as Toyota vehicles. All accessories are covered by a 3-year warranty when purchased together with the vehicle[§].

For more information on peace of mind visit: www.toyota-europe.com/service-and-accessories

[§] Check with your retailer for specific Toyota Hybrid Service Programme details. [§] Check with your retailer for specific warranty details. ^{**} Transport to the nearest authorised Toyota repairer will also be covered. In addition the 3-year/unlimited mileage paint warranty protects against defects and surface rust caused by a manufacturing fault. Every new Toyota is covered by a 12-year anti-corrosion (not valid for commercial vehicles) warranty against perforation of body panels caused by a manufacturing fault in materials or workmanship.

^{§§} Belgium 5 years/Portugal and Denmark 1 year.



THE NEW HIGHLANDER

GO BIG. GO HYBRID.

To the best of our knowledge, all information in this brochure is correct at time of going to print. Details of specifications and equipment provided in this brochure are subject to local conditions and requirements and may, therefore, vary from models available in your area. Please enquire with your local retailer for details on your local specifications and equipment. • Vehicle body colours may differ slightly from the printed photographs in this brochure. • Toyota Motor Europe reserves the right to alter any details of specifications and equipment without prior notice. • © 2022 by Toyota Motor Europe NV/SA ('TME'). • No part of this publication may in any way be reproduced without the prior written approval of Toyota Motor Europe.